

Registration Form

(Email to kelly@tkofarm.com or submit day of show)

Rider: _____

Horse: _____

Address: _____

Phone: _____

Email: _____

Trainer _____

Exhibitor # _____ Rider DOB _____
(Provided at sign in)

Division: _____

Classes entering in: A B C D E F (circle)

Cash/Check # _____ Total paid\$ _____

Under Florida law an equine activity sponsor is not liable for the injury to or even the death of a participant due to the inherent risk of equine activities. All participants, guests and parents of minor participants agree to hold Levy County Fair and the City of Williston and any of its associates harmless for any occurrence at any event offered by the above.

Participant signature

Parental/Guardian signature (minor participant)



Hunter Show Series
2009 / 2010



Questions? Contact Kelly Oliver
tkofarm.com Kelly@tkofarm.com
352 -529-0002



Airport Industrial Park
Across from the Horseman's Park
off Welbilt Rd. &
S.Highway 41, Williston,Fl

*A Family affordable, Trainer friendly
Local Schooling show for all!
**A Family affordable, Trainer friendly
Local Schooling show for all!***

10 Divisions

Show dates:
October 24th 2009, November 28th, 2009 and
April 10 and 11, 2010 during the Levy County Fair

Levy County Fair Hunter Show Series 2009/2010

All points recorded with rider regardless of mount!
Series points accumulate throughout 4 shows in series.
Class ribbons, Division Champion/ Reserve awards.
Series Champion / Reserve Awards announced and
presented at final show during the Fair on April 11,
2010

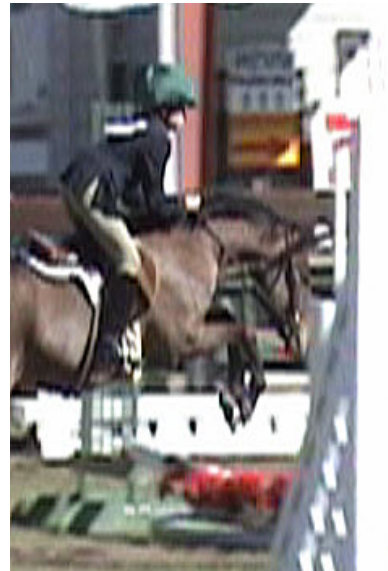
- I Walk Poles
- II Walk/Trot Poles
- III Walk/Trot Cross Rails
- IV Walk/Trot/Canter Cross Rails
- V Silver Stirrups poles/X Rails/18" *Over 35*
- VI Short Stirrup 18"
- VII Long Stirrup 18"
- VIII Green Horse/Beginner Rider 2'
- VIII Modified Child/Adult 2'3"
- X Open Hunters 2'6"

Open schooling 7:00 – 8:45am

Each exhibitor will register by the
division

Each division will contain the 6 following
classes:

- A.) Hunter in hand
- B.) Equitation on the flat
- C.) Equitation over fences/poles
- D.) Hunter Trip #1
- E.) Hunter Trip #2
- F.) Hunter Under Saddle



Grounds / Office / Schooling Fee
\$12.00*

- Must be paid by each exhibitor
regardless of number of classes
entered and/or schooling only!

Divisions entry fee is \$40.00 (incl. all
6 classes)

Individual class fee is \$10.00 each

To accelerate registration, please
download the entry form and bring
completed to the show with you! Entry
forms available at:
www.levycountyfair.com

Concessions available on show day
by Levy County Fair Association.

All proceeds after operating expenses/
awards will benefit the Levy County
Fair Association.

Pre-registration **REQUIRED** for
show dates during the fair April 10
& 11, 2010!

**Current negative coggins required for
all equines admitted to fairgrounds.**

No dogs allowed

*Adult and Junior
Hunter Divisions*

Show begins in both arenas at 9am promptly!